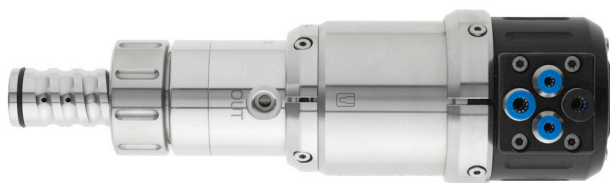


Retractex B

Specification Sheet (Ref 243240-XXXXXX)



The retractable pneumatic armature Retractex B was designed for sanitary applications in biotechnology, food, beverage and pharmaceutical industry. The compact design with a stroke of only 36 mm keeps wear on seals to a minimum and leads to excellent reliability - day and night, all year long. It can be cleaned easily and thoroughly in place, including the space between socket and rinsing chamber. The Retractex B with its patented HyCIP cleaning principle offers the best available cleaning efficiency for Ingold sockets (G 1¼").

Product Specifications

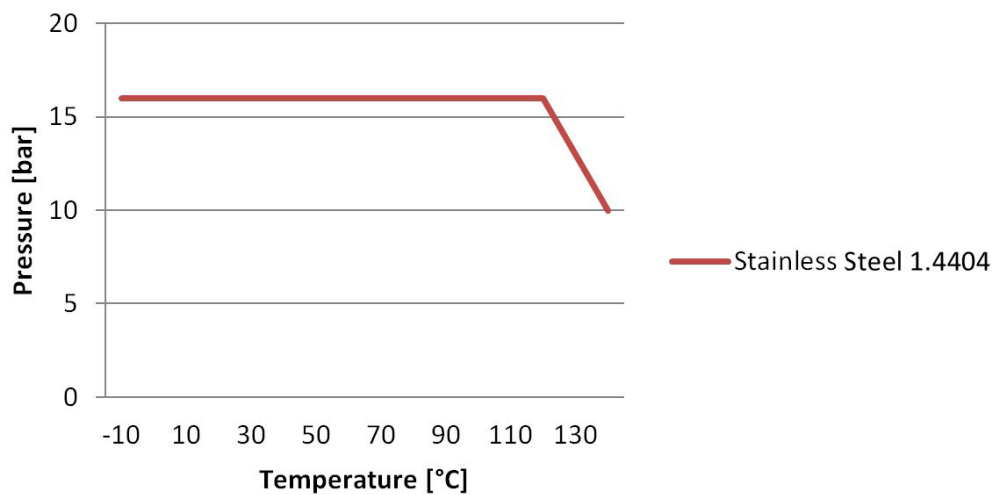
Armature Insertion Depth	Various (see Dimensions)
ATEX Approval	CE 0035 II 1/2 G Ex ia IIC T4/T5/T6 Ga/Gb CE 0035 II 1/2 D Ex ia IIIC T x °C Da/Db
Autoclavable	Insertion tube and rinsing chamber
Certificate	Yes, 3.1 certificate with heat number
CIP	Yes
Cleaning Pressure	1 to 4 bar
Cleaning Port connection	various (see Ordering Information)
Compressed Air	1 to 6 bar (filtered 40nm, water- and oil free; no continuous consumption)
Compressed Air connection	6 / 4 mm (control air); 4 / 2 mm (position sensing)
Diameter	Various (see Dimensions)
Electrode Shaft Length	225 mm (pH, ORP) / 215 (DO, COND)
IECEX	CE 0035 II 1/2 G Ex ia IIC T4/T5/T6 Ga/Gb CE 0035 II 1/2 D Ex ia IIIC T x °C Da/Db
Insertion Mode	Pneumatic
For Electrodes with	12 mm PG13,5
Materials	DIN 1.4404; PA6.6 GF30; O-Ring see Ordering Information

Product Specifications (continued)

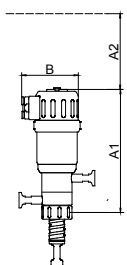
Max Diameter	Various (see Dimensions)
Max. Pressure	16 bar (120 °C), 10 bar (140 °C), see Process Conditions
Medium Affected Materials	DIN 1.4404
Min. Total Length	Various (see Dimensions)
OP	25 mm, 50 mm, 55 mm (see Ordering Information)
O-Ring Material	Various (see Ordering Information)
Operating Temperature Range	-10 to 140 °C (see Process Conditions)
Process Connections	Various process adapters (see Ordering Information)
Sensor Insertion Depth	Various (see Dimensions)
Serial Number	Yes
Steam Sterilizable	Yes
Surface Quality of Steel	Ra < 0.8 µm (N6)

Process Conditions

Max. allowed pressure PS	16 bar
Max. allowed temperature TS	140 °C



Dimensions

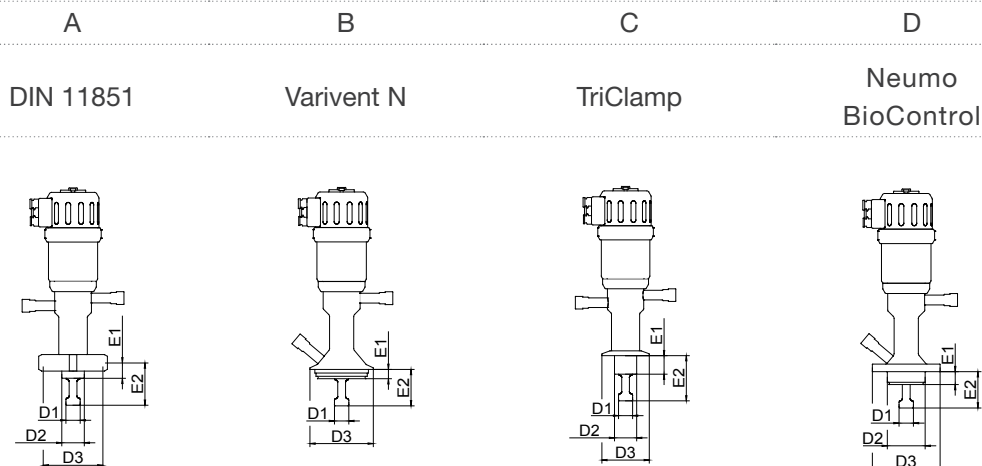


Holder

Dimensions	Retractex B
A ₁ [mm]	180
A ₂ [mm]	350
B [mm]	95

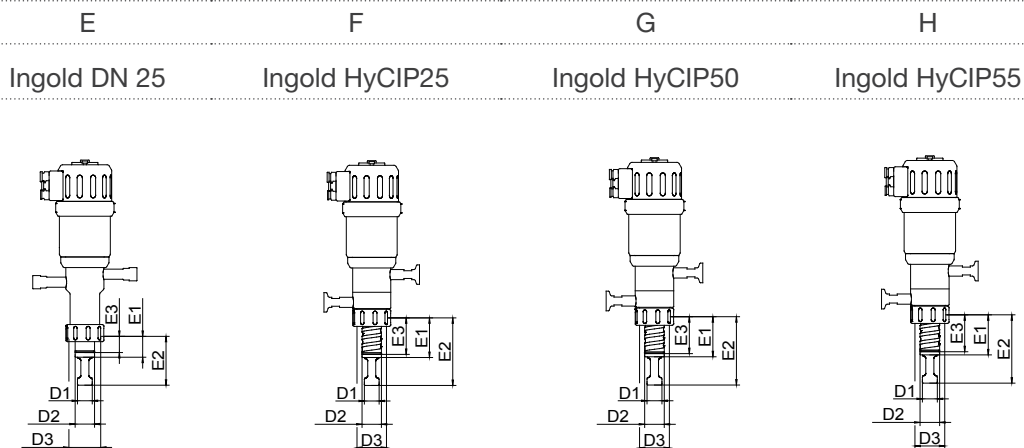
Dimensions (continued)

Process Connection Retractable B



Dimensions	DN50	DN40-125	1,5"	2"	DN50
E1 [mm]	18	12,3	22	25	17
E2 [mm]	54	48,3	58	61	48
D1 [mm]	Ø 19	Ø 19	Ø 19	Ø 19	Ø 19
D2 [mm]	Ø 30	-	Ø 30	Ø 30	Ø 50
D3 [mm]	Rd78 x 1/6"	Ø 84	Ø 50,5	Ø 64	Ø 89,5

Process Connection Retractable B



Dimensions	O-Ringpos. 28 mm	O-Ringpos. 25 mm	O-Ringpos. 50 mm	O-Ringpos. 55 mm
E1 [mm]	34	29	54	59
E2 [mm]	70	65	90	95
E3 [mm]	28	25	50	55
D1 [mm]	Ø 19	Ø 19	Ø 19	Ø 19
D2 [mm]	Ø 25	Ø 25	Ø 25	Ø 25
D3 [mm]	G 1¼"	G 1¼"	G 1¼"	G 1¼"

Ordering Information

Retractex B Retractable Holder

243240	Retractex B						
	Code	Holder, Wetted Material					
	1	Stainless Steel, 1.4404 (material certificate included)					
	0	Special Design					
		Code	Seals, Wetted Material				
		1	EPDM / FDA USP class VI (elastomer certificate)				
		2	FPM				
		0	Special Design				
			Code	Sensor			
			1	225 mm PG13,5 filled with gel			
			0	Special Design			
				Code	Process Connection		
				1	Ingold (G 1¼") O-Ring-Pos. 28mm		
				2	Varivent N DN40-125		
				3	TriClamp 1,5" (OD Ø 50,5 mm)		
				4	TriClamp 2" (OD Ø 64 mm)		
				5	NEUMO BioControl 50		
				6	DIN 11851 DN50 (Milchrohr)		
				7	HyCIP Ingold (G 1¼") O-Ring-Pos. 25 mm		
				8	HyCIP Ingold (G 1¼") O-Ring-Pos. 50 mm		
				9	HyCIP Ingold (G 1¼") O-Ring-Pos. 55 mm		
				0	Special Design		
					Code	Cleaning Port	
					1	G ⅛" (internal)	
					2	G ¼" (internal)	
					3	¼" NPT (internal)	
					4	TriClamp ¾"	
					9	TriClamp ¾" Ø 10,3 mm Sartorius	
					0	Special Design	
						Code	Position Reply
						1	Pneumatic
						0	Special Design
Ref: 243240 -							

Accessories and Spare Parts

Reference Number	Description
243241	Service Kit Retractex B EPDM (FDA) Ingold (not HyCip)
243242	Service Kit Retractex B EPDM (FDA) all except Ingold or HyCip
243243	Service Kit Retractex B EPDM (FDA) HyCip (not Ingold)
243244	Service Kit Retractex B FPM Ingold (not HyCip)
243245	Service Kit Retractex B FPM all except Ingold or HyCip
243246	Service Kit Retractex B FPM HyCip (not Ingold)
243204	Insertion Tube Retractex B / C 1.4404
243206	Set blind plug G 1/8" 1.4301 for cleaning chamber
243247	Safety weld-in socket straight, OP 28, 40 mm, 1.4404 incl. 3.1 cert.
243248	Safety weld-in socket inclined, OP 28, 40 mm, 1.4404 incl. 3.1 cert.
243250	Drive Unit - sensor 225/325 pneum. position switch

© 2015 Hamilton Company. All rights reserved.
All trademarks are owned and/or registered by Hamilton Company in the U.S. and/or other countries.
REF 695146/02 — 08/2015

HAMILTON®

Web: www.hamiltoncompany.com

USA: 800-648-5950

Europe: +41-58-610-10-10

Hamilton Americas & Pacific Rim

4970 Energy Way
Reno, Nevada 89502 USA
Tel: +1-775-858-3000
Fax: +1-775-856-7259
sales@hamiltoncompany.com

Hamilton Europe, Asia, & Africa

Via Crusch 8
CH-7402 Bonaduz, Switzerland
Tel: +41-58-610-10-10
Fax: +41-58-610-00-10
contact.pa.ch@hamilton.ch

To find a representative in your area, please visit hamiltoncompany.com/contacts.