

(1) EU-TYPE EXAMINATION CERTIFICATE



(2) Equipment and Protective Systems intended for use in
Potentially Explosive Atmosphere - **Directive 2014/34/EU**

(3) EU-Type Examination Certificate Number

TÜV 03 ATEX 7005 X

Issue: 11

(4) Equipment: pH, conductivity and oxygen sensors

(5) Manufacturer: HAMILTON Bonaduz AG

(6) Address: Via Crusch 8
CH – 7402 Bonaduz

(7) This product and any acceptable variation thereto are specified in the schedule to this certificate and the documents therein referred to.

(8) The TÜV Rheinland Zertifizierungsstelle für Explosionsschutz of TÜV Rheinland Industrie Service GmbH, Notified Body No. 0035 in accordance with Article 21 of the Council Directive 2014/34/EU of 26th February 2014, certifies this product which has been found to comply with the Essential Health and Safety Requirements relating to the design and construction of equipment and protective systems intended for use in potentially explosive atmosphere, given in Annex II to the Directive.

The examination and test results are recorded in the confidential report 557/Ex7005.12/03

(9) Compliance with the Essential Health and Safety Requirements, with the exception of those listed in the schedule of this certificate, has been assessed by reference to:

EN IEC 60079-0: 2018

EN 60079-11: 2012

EN 60079-26: 2015

(10) If the sign "X" is placed after the certificate number, it indicates that the equipment is subject to special conditions for safe use specified in the schedule to this certificate.

(11) This EU-Type Examination Certificate relates only to the design and specification for construction of the equipment or protective system. It does not cover the process for actual manufacture or supply of the equipment or protective system, for which further requirements of the directive are applicable.

(12) The marking of the equipment shall include the following:

II 1/2 G Ex ia IIB T4/T5/T6 Ga/Gb resp. Ex ia IIC T4/T5/T6 Ga/Gb

II 1/2 D Ex ia IIIC T x°C Da/Db

TÜV Rheinland Zertifizierungsstelle für Explosionsschutz

Cologne, 2022-02-22

Dipl.-Ing. Christian Mehnhoff



This EU-Type Examination Certificate without signature and stamp shall not be valid.
This EU-Type Examination Certificate may be circulated only without alteration. Extracts or alterations are subject to approval by the
TÜV Rheinland Industrie Service GmbH TÜV Rheinland Group Am Grauen Stein 51105 Köln
Tel. +49 (0) 221 806-0 Fax +49 (0) 221 806 114



(13)

Annex

(14)

EU Type Examination Certificate

TÜV 03 ATEX 7005 X

Issue: 11

(15)

Description of equipment

15.1 Equipment and type:

pH, conductivity and oxygen sensors

15.2 Description / Details of Change

General product information

The sensors are used for the measurement of the pH value, the content of oxygen or the conductivity of liquids. For this purpose the tip of the sensors is inserted into the medium to be measured using different types of fittings (armatures). Some of the sensors are equipped with an integrated temperature sensor PT100, PT1000 or NTC22kΩ. The tip of the sensors are located in zone 0 whereas the connection terminals are located in zone 1. The separation of the zone is done by sealing rings. The sensors have to be supplied by intrinsically safe circuits.

The principle of the pH measurement is the separation of charge in liquids. The quantity of the separated charge is an indicator for the pH value. Therefore the sensors are intended to be used in conductive liquids.

The principle of the measurement of oxygen is the reduction of oxygen at the cathode of the sensor. The current flow is proportional to the content of oxygen.

The conductivity of the liquid is measured directly from its resistive behavior.

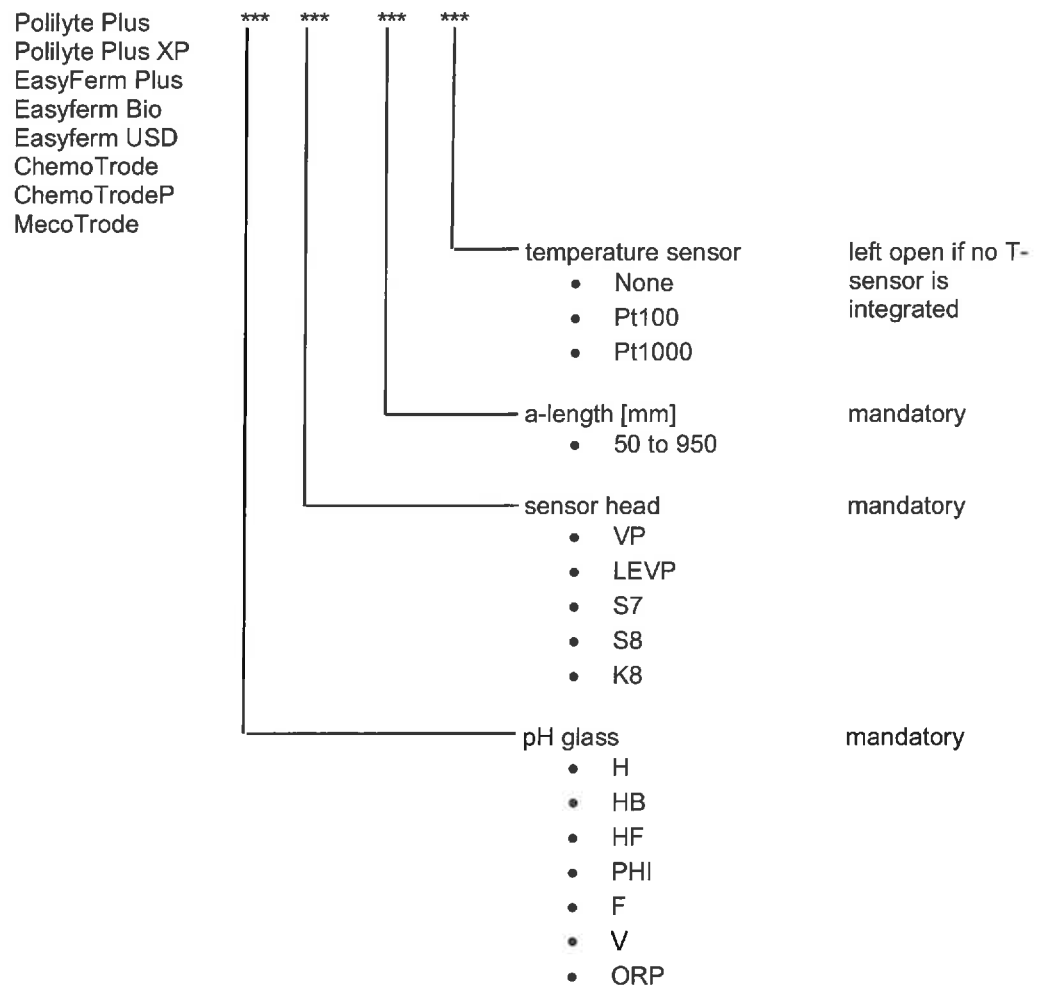
The temperature is measured by sensors PT100, PT1000 or NTC22kΩ which are located directly in the probe.

According to their design, the sensors are classified into different types, which take environmental temperature ranges and the electrical input parameters into account..

This EU Type Examination Certificate without signature and official stamp shall not be valid.
This certificate may be circulated without alteration. Extracts or alterations are subject to approval by:
Zertifizierungsstelle of TÜV Rheinland Industrie Service GmbH

Type Code:

pH sensor families Polilyte Plus, Polilyte Plus XP, EasyFerm Plus, EasyFerm Bio, EasyFerm USD, ChemoTrode, ChemoTrodeP and MecoTrode:



This EU Type Examination Certificate without signature and official stamp shall not be valid.
This certificate may be circulated without alteration. Extracts or alterations are subject to approval by:
Zertifizierungsstelle of TÜV Rheinland Industrie Service GmbH

| pH Sensors | | |
|--------------------------------|-----------------|-------------------|
| Name | Ex marking | Sensor type (1-7) |
| Polilyte PRO 120 | G: IIC; D: IIIC | 7 |
| Polilyte PRO VP 120 | G: IIC; D: IIIC | 2 |
| Polilyte RX 120 | G: IIC; D: IIIC | 7 |
| | | |
| Polilyte Plus *** ** | G: IIC; D: IIIC | 1,2,7 |
| Polilyte Plus XP *** ** | G: IIC; D: IIIC | 1,2,7 |
| Polilyte Plus XP VP 120 Pt1000 | G: IIC; D: IIIC | 2 |
| | | |
| Polyplast PRO 120 | G: IIB; D: IIIC | 7 |
| Polyplast PRO RX 120 | G: IIB; D: IIIC | 7 |
| | | |
| EasyFerm Plus *** ** | G: IIC; D: IIIC | 1,2,7 |
| | | |
| EasyFerm Bio *** ** | G: IIC; D: IIIC | 1,2,7 |
| | | |
| EasyFerm USD *** ** | G: IIC; D: IIIC | 1,2,7 |
| | | |
| ChemoTrode *** ** | G: IIC; D: IIIC | 1,2,7 |
| ChemoTrode 120 | G: IIC; D: IIIC | 7 |
| ChemoTrode 150 | G: IIC; D: IIIC | 7 |
| ChemoTrode 200 | G: IIC; D: IIIC | 7 |
| ChemoTrode 250 | G: IIC; D: IIIC | 7 |
| ChemoTrode 550 | G: IIC; D: IIIC | 7 |
| ChemoTrode ORP 120 | G: IIC; D: IIIC | 7 |
| ChemoTrode ORP 150 | G: IIC; D: IIIC | 7 |
| ChemoTrode VP 120 | G: IIC; D: IIIC | 2 |
| ChemoTrode VP 150 | G: IIC; D: IIIC | 2 |
| ChemoTrode VP 250 | G: IIC; D: IIIC | 2 |
| ChemoTrode P *** ** | G: IIC; D: IIIC | 1,2,7 |
| ChemoTrode P PHI 120 | G: IIC; D: IIIC | 7 |
| ChemoTrode P PHI 150 | G: IIC; D: IIIC | 7 |

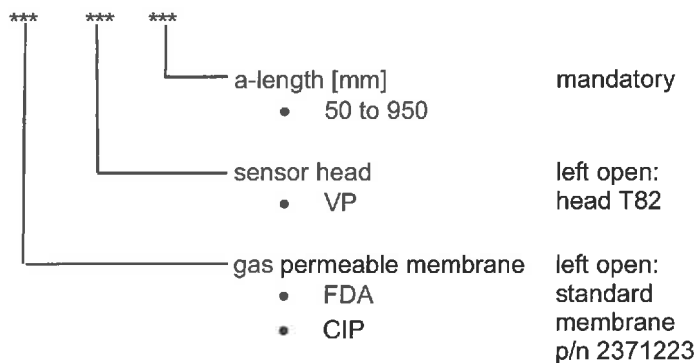
This EU Type Examination Certificate without signature and official stamp shall not be valid.
 This certificate may be circulated without alteration. Extracts or alterations are subject to approval by:
 Zertifizierungsstelle of TÜV Rheinland Industrie Service GmbH

| pH Sensors | | |
|-----------------------------|-----------------|-------------------|
| Name | Ex marking | Sensor type (1-7) |
| ChemoTrode P PHI 250 | G: IIC; D: IIIC | 7 |
| | | |
| FermoTrode 120 | G: IIC; D: IIIC | 7 |
| FermoTrode 150 | G: IIC; D: IIIC | 7 |
| FermoTrode 200 | G: IIC; D: IIIC | 7 |
| FermoTrode 250 | G: IIC; D: IIIC | 7 |
| | | |
| Liq-Glass PG | G: IIC; D: IIIC | 7 |
| | | |
| MecoTrode *** ** | G: IIC; D: IIIC | 1,2,7 |
| MecoTrode 120 | G: IIC; D: IIIC | 7 |
| MecoTrode Flat LEVP 225 | G: IIC; D: IIIC | 1 |
| MecoTrode VP 120 | G: IIC; D: IIIC | 1 |
| | | |
| NovoTrode LEVP 120 | G: IIC; D: IIIC | 2 |
| NovoTrode LEVP 225 (Pt1000) | G: IIC; D: IIIC | 2 |
| NovoTrode LEVP 225 (Pt100) | G: IIC; D: IIIC | 1 |
| | | |
| OxyTrode Platinum | G: IIC; D: IIIC | 7 |
| | | |
| InchTrode N75F | G: IIB; D: IIIC | 6 |
| InchTrode N75P | G: IIB; D: IIIC | 6 |
| InchTrode N75FC10 | G: IIB; D: IIIC | 3 |
| InchTrode N75PC10 | G: IIB; D: IIIC | 3 |

This EU Type Examination Certificate without signature and official stamp shall not be valid.
 This certificate may be circulated without alteration. Extracts or alterations are subject to approval by:
 Zertifizierungsstelle of TÜV Rheinland Industrie Service GmbH

O2 sensor family OxyFerm and OxyFerm XL:

OxyFerm
OxyFerm XL



| Oxygen Sensors | | |
|-------------------|-----------------|-------------------|
| Name | Ex marking | Sensor type (1-7) |
| Oxysens | G: IIC; D: IIIC | 4 |
| | | |
| OxyFerm *** ** | G: IIC; D: IIIC | 4,5 |
| OxyFerm VP 120 | G: IIC; D: IIIC | 5 |
| OxyFerm VP 225 | G: IIC; D: IIIC | 5 |
| OxyFerm VP 325 | G: IIC; D: IIIC | 4 |
| | | |
| OxyFerm XL *** ** | G: IIC; D: IIIC | 4 |
| OxyFerm XL | G: IIC; D: IIIC | 4 |
| OxyFerm XL 150 | G: IIC; D: IIIC | 4 |
| OxyFerm XL 300 | G: IIC; D: IIIC | 4 |
| | | |
| OxyGold B 120 | G: IIC; D: IIIC | 5 |
| OxyGold B 225 | G: IIC; D: IIIC | 5 |
| | | |
| OxyGold G 120 | G: IIC; D: IIIC | 5 |
| OxyGold G 225 | G: IIC; D: IIIC | 5 |

This EU Type Examination Certificate without signature and official stamp shall not be valid.
 This certificate may be circulated without alteration. Extracts or alterations are subject to approval by:
 Zertifizierungsstelle of TÜV Rheinland Industrie Service GmbH

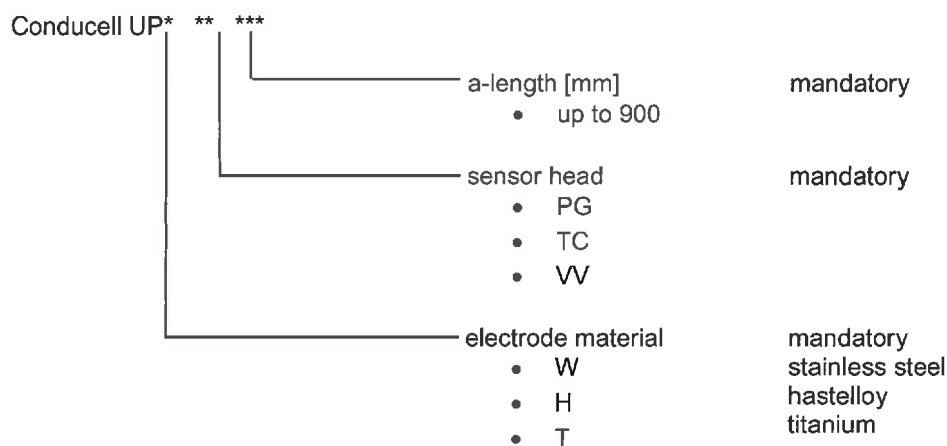
Conductivity sensor family Conducell 4US:

| | | | | |
|---------------|-----|-----------|----------------------|-------------------|
| Conducell 4US | *** | *** / *** | | |
| | | | O-ring position [mm] | option |
| | | | • 10 to 100 | |
| | | | a-length [mm] | mandatory |
| | | | • up to 130 | |
| | | | sensor head | mandatory |
| | | | • Gxxx | Pipethread xxx |
| | | | • Txxx | centi-inch |
| | | | | Triclamp with xxx |
| | | | | mm diameter |

Conductivity sensor family Conducell 4USF:

| | | | | |
|----------------|----|-----|--------------------|-----------|
| Conducell 4U*F | ** | *** | | |
| | | | a-length [mm] | option |
| | | | • up to 900 | |
| | | | sensor head | mandatory |
| | | | • VP | |
| | | | • VP TC 1.5 | |
| | | | • VP VV N | |
| | | | • VP VV F | |
| | | | • VP VV | |
| | | | • VP BC | |
| | | | • VP BCI | |
| | | | • VP NPT ¾ | |
| | | | • VP NPT 1 | |
| | | | electrode material | mandatory |
| | | | • S | steel |
| | | | • H | hastelloy |
| | | | • T | titanium |
| | | | • Pt | platinum |

This EU Type Examination Certificate without signature and official stamp shall not be valid.
This certificate may be circulated without alteration. Extracts or alterations are subject to approval by:
Zertifizierungsstelle of TÜV Rheinland Industrie Service GmbH

Conductivity sensor family Conducell UPW:


| Conductivity Sensors | | |
|---|------------------------|----------------------|
| Name (note: the spelling of Conducell can vary in upper and lower case) | Ex marking | Sensor type (1-7) |
| Conducell 4US - *** - *** / *** | G: IIB; D: IIIC | 6 |
| Conducell 4US G125 | G: IIB; D: IIIC | 6 |
| Conducell 4US T150 50 | G: IIB; D: IIIC | 6 |
| Conducell 4US T150 100 | G: IIB; D: IIIC | 6 |
| | | |
| Conducell 4U*F ** *** | G: IIB or IIC; D: IIIC | 6 |
| Conducell 4USF PG 120 | G: IIC; D: IIIC | 6 |
| Conducell 4USF PG 225 | G: IIC; D: IIIC | 6 |
| Conducell 4USF PG 325 | G: IIB; D: IIIC | 6 |
| Conducell 4USF PG 425 | G: IIB; D: IIIC | 6 |
| Conducell 4UTF PG 120 | G: IIC; D: IIIC | 6 |
| Conducell 4UHF PG 120 | G: IIC; D: IIIC | 6 |
| | | |
| Conducell UP* ** *** | G: IIB or IIC; D: IIIC | 6 |
| Conducell UPW PG 120 | G: IIC; D: IIIC | 6 |

This EU Type Examination Certificate without signature and official stamp shall not be valid.
 This certificate may be circulated without alteration. Extracts or alterations are subject to approval by:
 Zertifizierungsstelle of TÜV Rheinland Industrie Service GmbH

Technical Data:

All sensors are suitable for the connection to intrinsic safe circuits with a protection level ia. None of the declared values shall be exceeded in its sum (measuring and temperature circuit):

$U_i \leq 24V$ (unchanged)

$I_i \leq 173 \text{ mA}$ (unchanged)

$P_i \leq$ according to the following tables

The inner inductivities and capacities are negligible

Gas atmospheres:

The sensors are applicable up to the maximum environmental and media temperatures stated in the following tables depending on their power and temperature class:

Sensors of type 1 (glass shank / PT100)

| T-class | $P_i \leq 50 \text{ mW}$ | $P_i \leq 125 \text{ mW}$ | $P_i \leq 230 \text{ mW}$ | $P_i \leq 360 \text{ mW}$ |
|---------|--------------------------|---------------------------|---------------------------|---------------------------|
| T4 | 125 °C | 119 °C | 111 °C | 100 °C |
| T5 | 90 °C | 84 °C | 76 °C | 65 °C |
| T6 | 71 °C | 58 °C | 39 °C | 15 °C |

Sensors of type 2 (glass shank / PT1000)

| T-class | $P_i \leq 50 \text{ mW}$ | $P_i \leq 100 \text{ mW}$ | $P_i \leq 150 \text{ mW}$ | $P_i \leq 360 \text{ mW}$ |
|---------|--------------------------|---------------------------|---------------------------|---------------------------|
| T4 | 125 °C | 121 °C | 117 °C | 100 °C |
| T5 | 90 °C | 86 °C | 82 °C | 65 °C |
| T6 | 59 °C | 41 °C | 22 °C | NA |

Sensors of type 3 (synthetic shank / PT100)

| T-class | $P_i \leq 50 \text{ mW}$ | $P_i \leq 125 \text{ mW}$ | $P_i \leq 230 \text{ mW}$ |
|---------|--------------------------|---------------------------|---------------------------|
| T4 | 123 °C | 114 °C | 102 °C |
| T5 | 88 °C | 79 °C | 67 °C |
| T6 | 71 °C | 58 °C | 39 °C |

Sensors of type 4 (metal shank 22kΩ NTC)

| T-class | $P_i \leq 30 \text{ mW}$ | $P_i \leq 60 \text{ mW}$ | $P_i \leq 90 \text{ mW}$ |
|---------|--------------------------|--------------------------|--------------------------|
| T4 | 129 °C | 129 °C | 128 °C |
| T5 | 94 °C | 94 °C | 93 °C |
| T6 | 68 °C | 57 °C | 46 °C |

This EU Type Examination Certificate without signature and official stamp shall not be valid.
 This certificate may be circulated without alteration. Extracts or alterations are subject to approval by:
 Zertifizierungsstelle of TÜV Rheinland Industrie Service GmbH

Sensors of type 5 (metal shank 22kΩ NTC and certain fittings)

Sensors of type 5 must be incorporated in one of the following fittings – otherwise they may be considered a sensors of type 4:

Retractofit, Retractofit Bio, Flexifit TC, Flexifit Bio

| T-class | Pi ≤ 250 mW |
|---------|-------------|
| T4 | 125 °C |
| T5 | 90 °C |
| T6 | 75 °C |

Sensors of type 6 (synthetic body with PT1000)

| T-class | Pi ≤ 50 mW | Pi ≤ 100 mW | Pi ≤ 150 mW | Pi ≤ 170 mW |
|---------|------------|-------------|-------------|-------------|
| T4 | 109 °C | 91 °C | 72 °C | 64 °C |
| T5 | 74 °C | 56 °C | 37 °C | 29 °C |
| T6 | 59 °C | 41 °C | 22 °C | 14 °C |

Sensors of type 7 (without temperature sensor)

The shank of the sensors of type 7 are made of glass or synthetic.

| T-class | Pi ≤ 250 mW |
|---------|-------------|
| T4 | 125 °C |
| T5 | 90 °C |
| T6 | 75 °C |

Dust atmospheres:

The maximum surface temperature for dust atmospheres depends on the input power Pi and ambient/process temperatures Ta as follows:

| Input Power Sensor type | Pi ≤ 50mW | Pi ≤ 125mW | Pi ≤ 230mW | Pi ≤ 360mW |
|----------------------------|-------------|-------------|-------------|------------|
| 1 / 3 | Ta + 9°C | Ta + 22°C | Ta + 41°C | Ta + 65°C |
| 2 / 6 | Pi ≤ 50 mW | Pi ≤ 100 mW | Pi ≤ 150 mW | |
| | Ta + 21°C | Ta + 39°C | Ta + 58°C | |
| 4 | Pi ≤ 30 mW | Pi ≤ 60 mW | Pi ≤ 90 mW | |
| | Ta + 12°C | Ta + 23°C | Ta + 34°C | |
| 5 / 7 | Pi ≤ 250 mW | | | |
| | Ta + 5°C | | | |

This EU Type Examination Certificate without signature and official stamp shall not be valid.
 This certificate may be circulated without alteration. Extracts or alterations are subject to approval by:
 Zertifizierungsstelle of TÜV Rheinland Industrie Service GmbH

Armatures:

Following limitations for the usage of armatures have to be considered:

| Armature/fitting | Ex marking |
|--|--|
| RetractoFit Series | G: IIC; D: IIIC |
| RetractoFit PEEK Series | G: IIB; cannot be used in Dust |
| FlexiFit Series, type a, b and c | G: IIC; D: IIIC |
| FlexiFlow Series | G: IIC; D: IIIC |
| FlowCell | G: IIA; cannot be used in Dust |
| Hygienic Socket | G: IIC; D: IIIC |
| MasterFit 120 | G: IIC; D: IIIC |
| MasterFit 150 | G: IIC; D: IIIC |
| MasterFit 200 | G: IIC; D: IIIC |
| Flange Adapter | G: IIB; cannot be used in Dust |
| Retractex B Series | G: IIC; D: IIIC |
| Retractex C Steel (M) Series Retractex C Steel LT (M) Series (process connection in stainless steel) | G: IIC; D: IIIC |
| Retractex C Plastic (M) Series Retractex C Plastic LT (M) Series Type A and B (process connection in PEEK, PVDF or other polymeric materials) | G: IIB or IIA (see certificate for the restrictions) cannot be used in Dust |
| Retractex BC Steel (M) Series | G: IIC; D: IIIC |
| Retractex BC Plastic (M) Series (process connection in PEEK, PVDF or other polymeric materials) | G: IIB or IIA (see certificate for the restrictions) cannot be used in Dust |
| Sensor Dummy Series | G: IIC; D: IIIC |

Abbreviations for Retractex:

LT: long tube

M: manual retraction (not pneumatic)

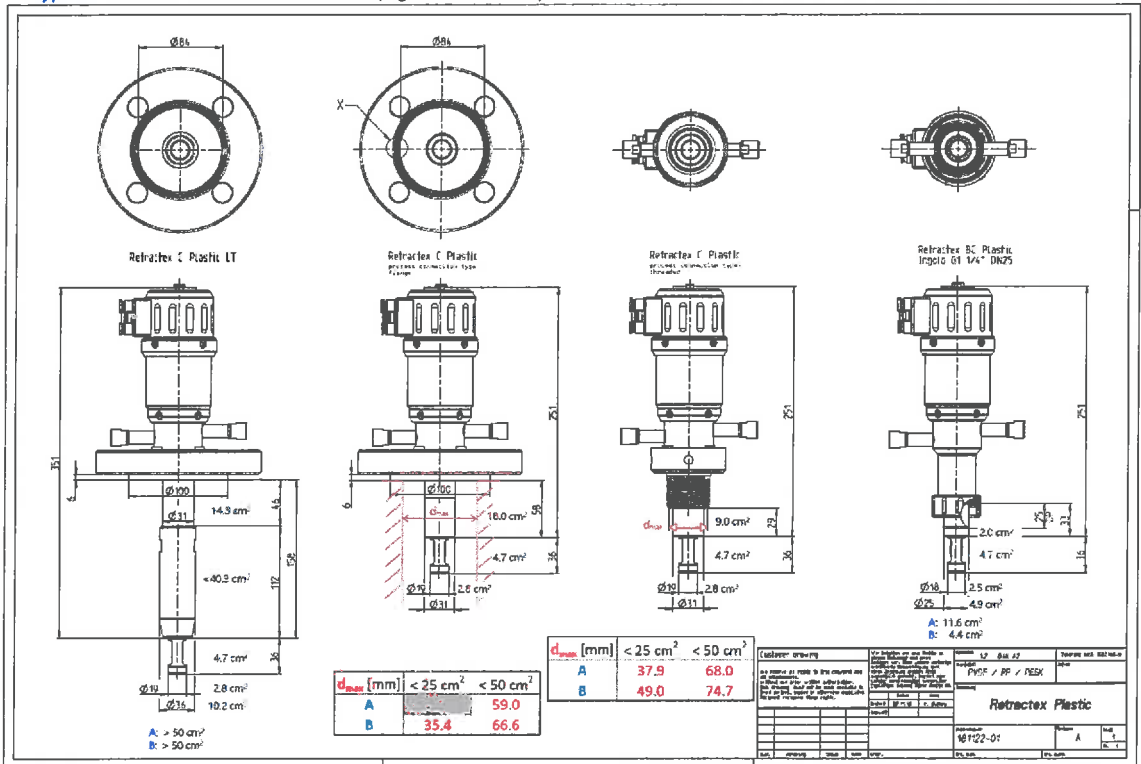
Type A: insertion tube completely made of plastics (e.g. polypropylene, PEEK, ...)

Type B: Insertion tube made of plastic and steel

This EU Type Examination Certificate without signature and official stamp shall not be valid.
 This certificate may be circulated without alteration. Extracts or alterations are subject to approval by:
 Zertifizierungsstelle of TÜV Rheinland Industrie Service GmbH

The end user shall assess the suitability of the Retractable armatures in different gas groups and configurations:

Type A: Insertion Tube Plastic only (e.g. Polypropylene; PEEK)
Type B: Insertion Tube Plastic and Metal (e.g. PVDF / 2.4602)



The drawing shows the correlation between the mounting situation and the diameter (flange or shaft) of the exposed plastic surface for

- a flange connection (left, not allowed in Ex atmospheres)
- a connection where the flange is partly covered (2nd from left); Max. diameter given in the table below.
- a threaded connection (2nd from right); Max. diameter given in the table below.
- BC version (no restrictions for IIA and IIB)

The max. diameters are given in so that the overall exposed surface does not exceed the limits for IIA (50cm²) and IIB (25cm²).

This EU Type Examination Certificate without signature and official stamp shall not be valid.
This certificate may be circulated without alteration. Extracts or alterations are subject to approval by:
Zertifizierungsstelle of TÜV Rheinland Industrie Service GmbH

A summary for the suitability of Retractable armatures is given below:

| Gas Group / permitted plastic surface [cm ²] Product Family | IIA 50 | IIB 25 | IIC 4 |
|--|--|--|----------------|
| Retractable C Steel (M) | no restriction | no restriction | no restriction |
| Retractable C Steel LT (M) | no restriction | no restriction | no restriction |
| Retractable C Plastic (M) Type A flange connection | medium exposed flange diameter $d_{max} < 59.0\text{mm}$ | not allowed | not allowed |
| Retractable C Plastic (M) Type B flange connection | medium exposed flange diameter $d_{max} < 66.6\text{mm}$ | medium exposed flange diameter $d_{max} < 35.4\text{mm}$ | not allowed |
| Retractable C Plastic (M) Type A threaded connection | medium exposed flange diameter $d_{max} < 68.0\text{mm}$ | medium exposed flange diameter $d_{max} < 37.9\text{mm}$ | not allowed |
| Retractable C Plastic (M) Type B threaded connection | medium exposed flange diameter $d_{max} < 74.7\text{mm}$ | medium exposed flange diameter $d_{max} < 49.0\text{mm}$ | not allowed |
| Retractable C Plastic LT (M) | not allowed | not allowed | not allowed |
| Retractable BC Steel (M) | no restriction | no restriction | no restriction |
| Retractable BC Plastic (M) | no restriction | no restriction | not allowed |
| Type A | Insertion tube completely made of plastic (e.g. Polypropylene, PEEK) | | |
| Type B | Insertion tube of plastic and steel (e.g. PVDF / 2.4602) | | |

Details of Change:

The scope of the 11th supplement is

- New options for the sensor heads of Conducell 4UxF
- Extension of P_i for sensor type 6
- New armature Hygienic Socket
- New sensor EasyFerm USD *** **
- New armature series Sensor Dummy
- New armature FlexiFlow
- New armature FlowCell

(16) Test-Report No. 557/Ex7005.12/03

This EU Type Examination Certificate without signature and official stamp shall not be valid.
 This certificate may be circulated without alteration. Extracts or alterations are subject to approval by:
 Zertifizierungsstelle of TÜV Rheinland Industrie Service GmbH

(17) Special Conditions for safe use

1. The temperature classification depends on the ambient temperature and input power. The tables in the CoC have to be observed.
2. The sensors, cableways and associated apparatus have to be included into the equipotential bonding.
3. The attached marking plate must be applied at the cable or connection device as close as possible to the sensor at the time of installation.
4. The proper click-in of the safety button shall be observed after cleaning.
5. The gaskets (O-rings) have to be renewed after cleaning or maintaining of the armatures.

(18) Basic Safety and Health Requirements

Covered by afore mentioned standard

TÜV Rheinland Zertifizierungsstelle für Explosionsschutz

Cologne, 2022-02-22

Dipl.-Ing. Christian Mehrhoff



This EU Type Examination Certificate without signature and official stamp shall not be valid.
This certificate may be circulated without alteration. Extracts or alterations are subject to approval by:
Zertifizierungsstelle of TÜV Rheinland Industrie Service GmbH